

سي ستار
SEA STAR

T-PIN TILE LEVELING SYSTEM



PERFECT TILE-TO-TILE FINISH – REUSABLE



www.seastartradingco.com



/seastartradingco

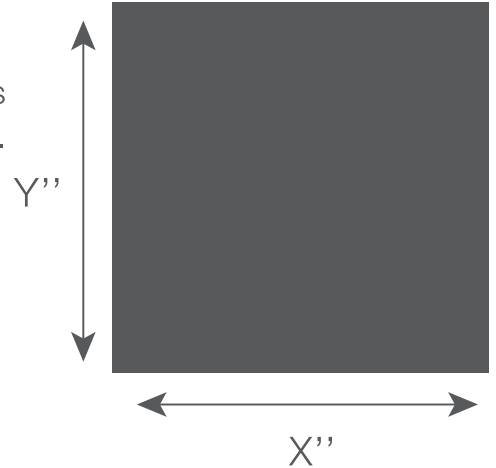
T-PIN TILE LEVELING SYSTEM

USAGE TABLE

Typical job uses one set per sq. ft.

Y"																
4"	2000															
6"	2330	890														
8"	1000	670	500													
10"	800	530	400	320												
12"	1000	670	500	400	440											
13"	910	610	450	360	400	370										
16"	750	500	370	300	330	300	250									
18"	670	440	330	270	300	270	220	200								
20"	600	400	300	240	270	240	200	180	160							
24"	500	330	250	200	220	200	170	150	130	110						
32"	500	330	250	200	210	190	160	140	120	100	90					
36"	440	300	220	180	190	170	140	120	110	90	80	70				
40"	500	330	250	200	200	180	150	130	120	100	90	80	80			
42"	460	310	230	190	190	170	140	130	110	90	80	70	80	70		
48"	420	280	210	170	170	150	130	110	100	80	70	60	70	60		
	4"	6"	8"	10"	12"	13"	16"	18"	20"	24"	32"	36"	40"	42"	48"	X"

Approximate pieces per 100 sq. ft.

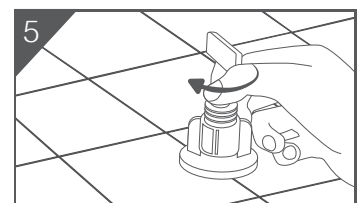
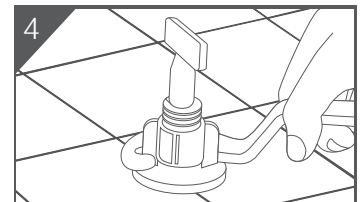
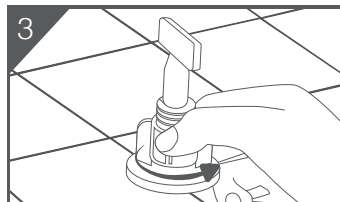
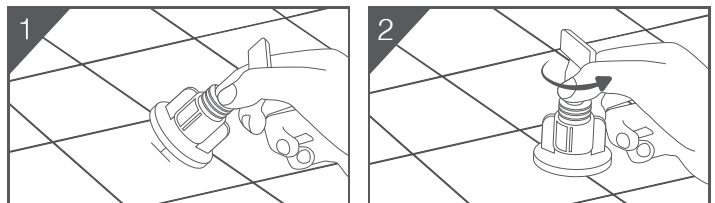


Example 1: 18x18 tile installation requires 200 sets of T-pin TLS per 100 sq.ft.

Example 2: 12x24 tile installation requires 220 sets of T-pin TLS per 100 sq.ft.

USAGE INSTRUCTIONS

1. Insert T-PIN Leveler
2. Twist 90 degrees to lock.
3. Twist bottom section to level
4. Tighten with the wrench if needed
5. Twist from the top and remove



PRODUCT CALCULATION

See Coverage calculator on our website / see usage chart mentioned above

PACKAGING

50 pieces per packet including 1 piece wrench (tool)

